

Canon



GRAPHIC ARTS SOLUTIONS



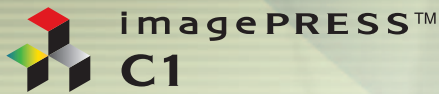
 **imagePRESS™**
C1

meap
POWERED BY

GRAPHIC ARTS SOLUTIONS

THE imagePRESS C1 DIGITAL PRINT SYSTEM

Canon meets the challenge of taking color digital printing to the next level with the imagePRESS C1 digital print system.



From creative to production environments, the imagePRESS C1 digital print system was designed for color-critical customers—for proofing to short-run color applications. This system was built to deliver:

- Outstanding image quality that complements offset print
- Remarkably consistent color that meets today's color-critical demands
- Media versatility that keeps a focus on image quality

These innovations—achieved with a historical investment by Canon—deliver a dramatic improvement in customer satisfaction, with no compromise in economic efficiency. With outstanding color output at up to 14 pages per minute* and black-and-white output at 60 pages per minute,* the imagePRESS C1 digital print system delivers results that make heads turn!

* Letter-sized pages.

OUTSTANDING IMAGE QUALITY—COLOR COMES FIRST

imagePRESS C1 output is remarkable—it's far beyond what you're used to seeing from conventional electrophotographic printers.

You'll see what we mean immediately—the imagePRESS C1 system's print quality is far beyond that of other solutions in today's marketplace. The technologies behind Canon's "color first" are widespread:

- A small toner particle size that averages 5.5 microns delivers vivid and detailed images.
- True 1200 x 1200 dpi resolution results in razor-sharp text and graphics.
- Advanced Smoothing Technology (AST) eliminates jagged edges in exchange for smooth curves.



COLOR CONSISTENCY THAT ELIMINATES REPRINTS

Stable, consistent color is the hallmark of the imagePRESS C1 digital print system. This quantum leap in color stability delivers the confidence you require in your short-run color or proofing output.

- Color remains stable over time—edge to edge, page to page.
- Low ΔE means reliable color is standard with every job.

MEDIA VERSATILITY THAT DELIVERS THE LOOK AND FEEL OF OFFSET

Specifying from a wide range of media is key to producing a great-looking finished piece. The imagePRESS C1 digital print system enables a wider choice by raising the bar for media versatility in a number of important ways. It also offers the New Media Library for optimized printing of various media.

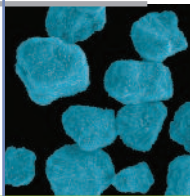
- Prints on media sizes up to 13" x 19"
- Handles media weights from 17 lb. Bond up to 140 lb. Index
- Prints on thin, thick, coated, and textured media as well as labels and tabs—with no quality trade-offs

A BREAKTHROUGH IN IMAGE QUALITY AT TRUE 1200 DPI

Canon is all about innovation, and the imagePRESS C1 digital print system confirms that reputation.

V TONER DELIVERS EXCEPTIONAL COLOR

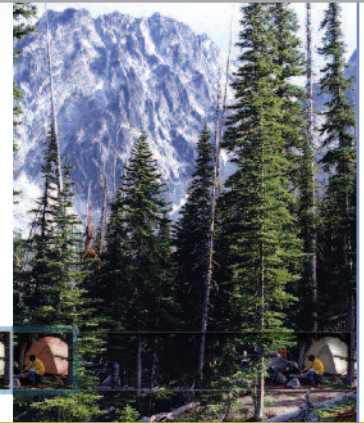
V Toner is quite simply the finest pulverized toner on the market. It combines an extremely small particle size—averaging just 5.5 microns—with a large color gamut. The result is vivid and vibrant colors throughout the job. This oil-free toner also eliminates the unflattering streaking that could often blemish a job. Finally, the belt fusing technology, in combination with the V Toner, eliminates another unwanted characteristic of digital printing, “the 3D effect.”



V Toner

TRUE GLOSS OPTIMIZATION IS REALIZED

The imagePRESS C1 digital print system delivers a long sought-after goal of digital printing—a natural-looking gloss finish. The belt fusing method varies the time the V Toner is exposed to the fusing unit so the toner is fixed evenly, eliminating blistering and wrinkling. Even high-density levels on gloss media have a smooth finish. The greatest value of Gloss Optimization is that gloss levels of the media are maintained. Matte media gives you the intended matte finish and glossy media maintains its gloss appearance. The payoff is a real offset appearance that sells itself.



ADVANCED SMOOTHING TECHNOLOGY (AST)

AST from Canon dramatically reduces jagged edges by creating smooth curves, sharp edges, and clean lines. Graphics and text look sharper and crisper. Gradients are even and continuous. The outcome is that the overall visual quality is raised to a much higher level than previously possible.



Toner Cartridges

STUNNING RESOLUTION FROM THE TWIN RED IMAGING LASER

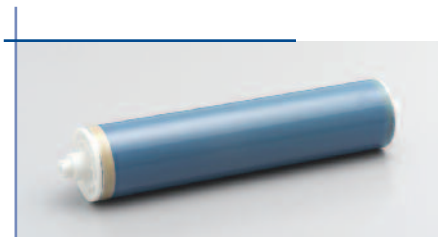
With its small path twin red laser beams, the new Canon imagePRESS C1 digital print system brings a new level of precision to imaging. It's one more reason why the image quality is so dramatically improved. Every job prints up to true 1200-dpi resolution so lines are clean and precise and characters are sharp and well defined. Higher resolution, finer half-tones, and smooth gradients mean crisp text and more detailed graphics, thus ensuring a consistently higher image quality.

COLOR CONSISTENCY THAT SETS A NEW STANDARD

True color consistency for digital printers always has been a challenge. The imagePRESS C1 digital print system includes innovative technologies to help prevent shifts in hue as well as set and maintain a low ΔE .

IMPRESSIVE IMPROVEMENTS WITH THE E DRUM

Color control starts with the E Drum. Developed specifically to enhance overall performance of the imagePRESS C1 digital print system, it takes color consistency to the next level—reliable every day. The overcoat layer improves color stability and drum durability. The net return is dramatically improved productivity with much more consistent uptime.



E Drum

AUTO CARRIER REFRESH (ACR) ENSURES STABLE COLOR

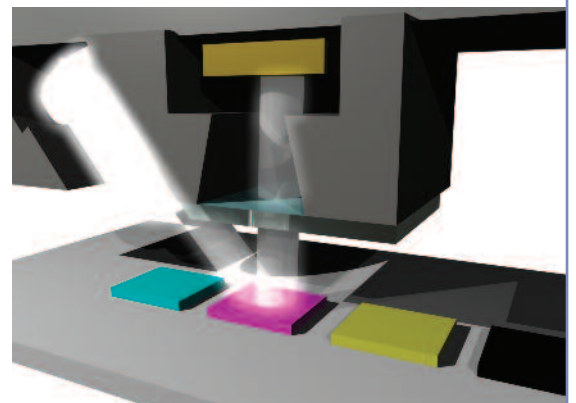
Underpinning imagePRESS C1 device's color consistency is Canon ACR technology. ACR technology delivers stable image quality page after page after page. It automatically supplies fresh carrier for reliable, consistent density. In doing so, it improves uptime by eliminating frequent carrier changes.

AUTOMATIC COLOR CONTROL WITH REAL-TIME CALIBRATION

Canon's Real-Time Calibration function substantially reduces and controls shifts in color. Two sensors measure color test patches; if an unacceptable hue shift is detected, the press automatically resets itself to instantly produce the correct color. Essentially, Real-Time Calibration enables automatic color adjustments on-the-fly. In addition, this capability operates in all copy and print modes, ensuring noticeable improved color consistency all the time.

THE NEXT LEVEL IN CALIBRATION

Calibration is an integral piece of consistent color, but manual calibration is not for everyone. That's why the imagePRESS C1 system includes Automatic Press Calibration. Whether your configuration is without a Color Image Reader-H1 or you're just looking for less operator intervention, this next level of calibration helps ensure consistency for demanding color environments. Test patterns are printed and automatically measured and, if needed, adjustments are made.



Automatic Press Calibration

MEDIA VERSATILITY

The imagePRESS C1 digital print system dramatically expands the printable area and the range of printable media to allow your customers significantly greater options.

STRAIGHTER PAPER PATH ELIMINATES MEDIA HEADACHES

To improve the handling of a wide range of surfaces and thicknesses, the paper path in the imagePRESS C1 digital print system has been designed to be as straight as possible. This minimized stress on media and substantially reduces paper jams of more types of media.

for customized postcards and other applications. The standard Buffer Pass Unit helps to eliminate curls from coated and other media. Large volumes of coated media can be loaded in the Paper Deck-AA1, thanks to new Enhanced Air Assist Technology, which allows for reliable feeding.

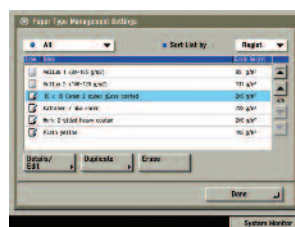


A MAJOR BREAKTHROUGH IN TRANSFER BELT TECHNOLOGY

The Canon Advanced Imaging Transfer Belt (AITB) drives improvements in both media versatility and image quality. Created for optimum image transfer, the AITB uses a composite construction to print superb color on a wide range of surfaces. The soft belt surface enables excellent image transfer to coated and textured media. The hollow imaging of traditional belt technology is effectively eliminated.

MEDIA FLEXIBILITY SPARKS IMPROVED PRODUCTIVITY

The imagePRESS C1 digital print system serves up true media flexibility by offering a wide range of options, from size to thickness to coated and tab media. This flexibility positions you to be more responsive to your customers' varied needs. The system can feed media up to 13" x 19" from all four drawers and the Stack Bypass. It can accept media up to 140 lb. Index (256gsm)



Media Library

SUPERIOR MEDIA CONTROL WITH THE NEW MEDIA LIBRARY

Managing printing specifications for different media has never been easier. The Media Library allows users to edit, manage, and select media from one central location.

Consequently, the operator is assured that the job is optimized for any particular media selection. Specifications can be controlled by Name, Basis Weight, Finish, and Type. The Media Library includes 37 of today's most popular media while providing extra capacity for up to 200 custom media types.



Four Media Cassettes

ARCHITECTURE THAT DRIVES PRODUCTIVITY

USER INTERFACE AND ARCHITECTURE

- 10.4" TFT display for improved operability
- Instant status display for media and toner levels
- Up to 1.5GB RAM and 80GB HDD
- Mail Box: local archival solution



SFP Model with Printer Cover-A1

HIGH-SPEED SCANNING

- Optional Duplexing Automatic Document Feeder (DADF-R1)
- Up to 80 ipm (300 dpi); up to 50 ipm (600 dpi)
- 100-sheet capacity
- Media weights from 10 lb. Bond to 80 lb. Cover



MFP/Copier Model with Optional DADF-R1

ADVANCED FINISHING OPTIONS

- Stacking capacities up to 4,000 sheets
- Collating and advanced stapling capabilities
- Two- or three-hole punching with Optional Puncher Unit-M1
- Saddle-stitched booklets, up to 15 sheets (60 pages)

OUTSTANDING MEDIA HANDLING

- Media handling up to 13" x 19" from every standard source
- Up to 550 sheets from all four standard drawers
- Up to 110 lb. Index from drawers
- Enhanced Air Assist Technology with the optional Paper Deck-AA1
 - Media acceptance up to 13" x 19"
 - Thicknesses up to 140 lb. Index
 - Specifically designed for coated media



Saddle-stitched
Booklet



Three-hole Punch



Stapled Output

POWERFUL PRINT CONTROLLER OPTIONS DRIVE TOP PERFORMANCE

In today's fast-paced printing environment, a superior reproduction system needs to be fast but efficient, precise but flexible.

It also needs to cope with the extreme range of jobs—from entry-level graphics and office documents to intensive graphic and variable data files. The imagePRESS C1 digital print system delivers this exceptional performance with three levels of print controllers.

CANON imagePRESS SERVER Q1

For the highest performance for large graphic files and precise color management, the imagePRESS Server Q1 is a robust color server for graphic arts and production environments. Built on Microsoft® Windows® XPe Platform with an Intel® Pentium® 4 3.2GHz processor, 1GB of RAM and a 160GB hard drive, the imagePRESS Server Q1 is powerful by design to meet the growing demands of the Graphic Arts Market. In addition to top performance, it provides flexibility, security, and an advanced set of management tools including the Graphic Arts Package as standard software. Available for more color demanding environments are options like the Graphic Arts Package, Premium Edition, the Production Printing Package, and Impose.



imagePRESS Server Q1

CANON imagePRESS SERVER T1

This mid-level controller unites many functions into a single integrated, high-performance system with a powerful, flexible, operator-centric workflow. It offers the highest-quality color of any embedded solution with an advanced level toolset that includes Spot-On® Color Editor and Auto Trapping for high-end functionality. Built with an Intel Celeron® M 1.5GHz and on a Linux platform, the imagePRESS Server T1 delivers optimum performance for corporate, creative color, and light color production environments. The system also includes 256MB RAM and a 80GB Hard Drive and supports Adobe® PostScript® 3™ and PCL.



imagePRESS Server T1

COLOR UFR II/PCL/PS KIT-P1

For office environments requiring high quality but not printing primarily from graphic applications, this controller efficiently handles print tasks from Microsoft Office applications. Also, a perfect fit for those CRD environments that already have Canon imageRUNNER® and Color imageRUNNER systems with Canon controllers. The learning curve will be simple and the workflow very consistent. It supports PCL 5c, PCL 6, and PostScript 3 emulation. Also standard is the Canon proprietary UFR II (Ultra Fast Rendering), which optimizes the power of the client PC as well as the UFR II/PCL/PS Kit-P1 Board.

imagePLATFORM FOR imagePRESS

imagePlatform for imagePRESS harnesses all benefits of the imagePRESS C1 digital print system to give graphic arts environments the multifunctionality, versatility, and performance they need, quickly and easily.

COLOR UNIVERSAL SEND

Managing document workflow is much easier with Canon's optional Color Universal Send capabilities. In just one simple operation, scanned documents can be distributed to multiple network destinations, such as e-mail, local Mail Boxes, network folders, and document management systems. In addition, you can send documents to user addresses in a local Address Book, look up users from multiple LDAP servers on your network or manually enter a destination. Once Universal Send is configured, the possibilities are immense. The optional PDF Advanced Feature Set-A1 offers many additional enhancements, such as PDF High Compression, Trace & Smooth PDF, and Searchable PDF.



Universal Send

UNIVERSAL SEND'S ADVANCED FEATURE SET-A1 TAKES WORKFLOW FARTHER

COLOR UNIVERSAL SEND

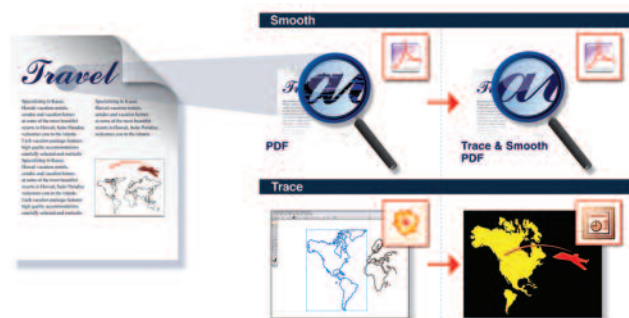
Scanning and sending color documents over the network can be a challenge, but with Canon's proprietary PDF High Compression Mode, file sizes are substantially reduced. This capability lessens the pressure on network bandwidth, often a headache for companies with a high number of graphic-intensive files that need to be shared.

TRACE & SMOOTH PDF

Another Canon exclusive, this feature enables the text in PDF files to be converted to scalable artwork (vector graphics data) in PDF format. These vector outlines have much sharper edges, thereby increasing readability. In addition, they can be manipulated in Adobe Illustrator® to create elements for other documents.

SEARCHABLE PDF DOCUMENTS

After scanning for PDF creation, the text is then embedded within the file and available for extraction or keyword searches via this search function. This ability enables the easy scanning and converting of scanned documents into the workflow.



Trace & Smooth

ACCURATE COLOR AND IMPROVED WORKFLOW

Brilliantly vivid color output sent where you want, when you want.

imagePLATFORM for imagePRESS also offers internal Mail Boxes for document storage and print-on-demand applications. Documents can be combined and printed as a single job or sent to multiple destinations in a variety of formats. For large files to multiple locations, the URL Send feature e-mails a link for remote previewing or printing.

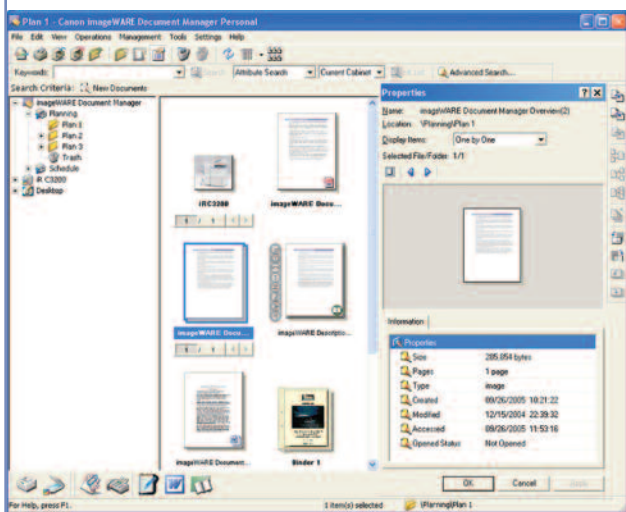
DESKTOP INTEGRATION

As a total end-to-end document solution, Canon's imageWARE Document Manager Personal Version 4 is without peer. Capture, archive, retrieve, and manipulate documents within Mail Boxes right from a desktop PC. This function seamlessly integrates your workspace with the imagePRESS C1 digital print system.



OPEN PLATFORM INTEGRATION FOR A CUSTOMIZED APPROACH

With Canon's Java-based MEAP® architecture, you can design custom interfaces and applications to run on the imagePRESS C1 print system. With this capability, you can easily create customized solutions to seamlessly integrate your business processes into the workflow. And as with all Canon systems, scalability is built-in.



imageWARE Document Manager Personal Version 4

DEVICE SECURITY AND ACCESSIBILITY

Uncommonly robust security plus added accessibility when needed.

DEVICE ACCESS AND DATA SECURITY

The imagePRESS C1 digital print system includes features to help you guard against unauthorized access to the device and its data. In addition to user-level authentication, it can also restrict access from the network. The imagePRESS C1 system supports IPv6 for enhanced network infrastructure management. To protect your stored, scanned, and printed data, the HDD Data Erase option permanently removes deleted files by overwriting them up to three times. The HDD Data Encryption option has achieved Common Criteria (CC) certification and provides additional security by encrypting data before it's written to the hard disk drive.



ADF Access Handle



Voice Guidance Kit

ACCESSIBILITY

Canon has designed the imagePRESS C1 digital print system to provide ease-of-use for a wide range of operators. The ADF Access Handle attaches to the document feeder for easy access by seated users. Remote users have access and control via the Remote Operator Software Kit. It emulates control panel screens on networked computers to provide easy availability for users. A Voice Guidance Kit provides audible confirmation of settings for easier programming by visually impaired users.

SPECIFICATIONS

MAIN UNIT

Technology:	Laser Electrostatic Transfer System
Developing System:	Dry Dual Component Developing System Auto Carrier Refresh
Acceptable Originals (MFP and Copier Model):	Sheets, Books, 3-Dimensional Objects (Up to 4.4 lb./2kg) 11" x 17" (Ledger)
Max. Original Size:	Executive, Statement-R, Letter-R, Letter, Legal, 11" x 17", 12" x 18", 13" x 19"
Copy/Print Sizes:	3-5/16" x 5-7/8" to 13" x 19"
Cassette-Feeding:	(100mm x 148mm to 330mm x 483mm)
Stack Bypass:	
Magnification:	
Preset Reduction:	25%, 50%, 61%, 70%, 81%, 86%
Preset Enlargement:	115%, 122%, 141%, 200%, 400%
Zoom Mode:	25% - 400% (Between 25% and 400%, in 1% Increments)
Copy/Print Speeds (Letter):	Up to 14 ppm (Color)/Up to 60 ppm (B/W)
First-Copy Time:	7.6 Seconds (B/W), 14.1 Seconds (Color)
Warm-Up Time:	11 Minutes 40 Seconds Max. After Powering On (68°F/20°C)
	11 Minutes 40 Seconds From Sleep Mode
Image Server Memory:	80GB HDD + 1GB RAM (Max 1.5GB)
Mail Box Features:	
Max. Mail Boxes Supported:	100 User Inboxes
Max. Stored Documents:	1,500 per Inbox
Max. Stored Pages:	3,000 Pages with Full Color 6,000 Pages with B/W
Resolution:	
Scanning:	600 x 600 dpi
Printing:	1200 x 1200 dpi (Continuous Tone)
Half-tone:	256-Level Grayscale
Copy Exposure:	Automatic or Manual (9 Levels)
Paper-Feeding:	
Standard:	550 Sheets Paper Drawers x 4 (2,200 Sheets: 20 lb. Bond/80gsm) Stack Bypass (100 Sheets: 20 lb. Bond) Paper Deck-AA1/AB1 (3,500 Sheets: 20 lb. Bond)
Optional:	
Acceptable Paper Weights:	
Cassettes:	17 lb. Bond to 110 lb. Index (64gsm - 209gsm) and Transparency 17 lb. Bond to 140 lb. Index (64gsm - 256gsm) and Transparency
Stack Bypass:	Standard Automatic Trayless Duplexing 1 to 999
Duplexing:	120V AC, 60Hz (From Main Engine)
Multiple Copies:	15A, 20A (Total Two Plugs for Main Unit)
Power Source:	
Power Plugs:	
Dimensions (H x W x D):	
(Printer/Reader, w/o UI):	41-3/8" x 33-5/8" x 35-5/8" (1042mm x 855mm x 898mm)
(Printer/Reader, with UI):	58-1/8" x 52-3/4" x 35-3/8" (1476mm x 1339mm x 898mm)
Weight (Printer/Reader):	Approximately 646 lb. (293kg)

ACCESSORIES

Color Image Reader-H1	
Image Sensor:	CCD
Originals:	Sheets, Books, 3-Dimensional Objects Up to 4.4 lb. (2kg)
Document Size:	Statement to 11" x 17" (139.7mm x 139.7mm to 297mm x 432mm)
Light Source:	Xenon Tube
Resolution:	600 x 600 dpi, 256 Gradations
Productivity:	Up to 80 ipm (300 dpi), Up to 50 ipm (600 dpi)
Power Source:	From Main Engine
Dimensions (H x W x D):	
(Excluding Document Feeder):	4-1/8" x 28-7/8" x 23-1/2" (105mm x 732mm x 595mm)
Weight	
(Excluding Document Feeder):	Approximately 38.5 lb. (17.5kg)
DADF (Duplexing Automatic Document Feeder)-R1*	
Tray Capacity:	100 Sheets
Scanning Speed:	Up to 80 Sheets per Minute (Letter)
Acceptable Original Sizes:	Statement to 11" x 17"
Acceptable Paper Weight:	13 lb. Bond to 80 lb. Cover (50gsm to 216gsm)
Dimensions (H x W x D):	5-5/8" x 25-1/2" x 22-3/8" (143mm x 646mm x 569.5mm) (Excl. Document Output Tray)
Weight	
(Excluding Output Tray):	Approximately 47.3 lb. (21.5kg)

Side Paper Deck-AA1**

Paper Capacity:	3,500 Sheets (20 lb. Bond)
Paper Size:	Letter, Letter-R, Legal, 11" x 17", 12" x 18", 13" x 19"
Paper Weight	
Non-Coated Media:	17 lb. Bond to 140 lb. Index (64gsm to 256gsm)
Coated Media:	28 lb. Bond to 140 lb. Index (106gsm to 256gsm)
Dimensions (H x W x D):	22-1/2" x 23-5/8" x 24-1/2" (570mm x 601mm x 621mm)
Weight:	Approximately 112.4 lb. (51kg)
Side Paper Deck-AB1	
Paper Capacity:	3,500 Sheets (20 lb. Bond)
Paper Size:	Letter
Paper Weight:	17 lb. Bond to 110 lb. Index
Dimensions (H x W x D):	22-5/8" x 12-7/8" x 23" (574mm x 326mm x 583mm)
Weight:	Approximately 68.3 lb. (31kg)

Finisher-AA1 and Saddle Finisher-AA2

Number of Trays:	3 Trays
Tray Capacity	
Non-Collate Mode	
Tray A:	250 Sheets (Letter, Statement-R, Executive) 125 Sheets (Legal, Letter-R, 11" x 17", 12" x 18", 13" x 19")
Tray B:	1,300 Sheets (Letter, Statement-R, Executive) 650 Sheets (Legal, Letter-R, 11" x 17", 12" x 18", 13" x 19")
Tray C:	2,450 Sheets (Letter, Executive) 1,700 Sheets (Statement-R) 650 Sheets (Legal, Letter-R, 11" x 17", 12" x 18", 13" x 19")
Collate and Group Mode***	
Tray B:	1,300 Sheets (Letter, Executive) 650 Sheets (Legal, Letter-R, 11" x 17")
Tray C:	1,700 Sheets (Letter, Executive) 650 Sheets (Legal, Letter-R, 11" x 17")
Staple Mode***	
Tray B/C:	1,300 Sheets/100 Sets (Letter, Executive) 650 Sheets/50 Sets (Legal, Letter-R, 11" x 17")
Max. Stapling Capacity	
Corner/Double:	50 Sheets (Letter, Executive) 30 Sheets (Letter-R, Legal, 11" x 17")
Saddle-Stitching (Saddle Finisher-AA2 Only)†	
Acceptable Paper Sizes:	Letter-R, Legal, 11" x 17", 12" x 18"
Capacity/Tray:	1 to 5 Sheets/25 Sets 6 to 10 Sheets/15 Sets 11 to 15 Sheets/10 Sets
Max. Stapling Capacity/Set:	15 Sheets
Folding:	V-Fold
Dimensions (H x W x D):	43-3/8" x 25-1/2" x 25-7/8" (1102mm x 646mm x 656mm)
Weight	
Finisher-AA1:	Approximately 106.9 lb. (48.5kg)
Saddle Finisher-AA2:	Approximately 158 lb. (71.5kg)
Attachable Accessories:	Puncher Unit-M1

Puncher Unit-M1

(Option for Finisher-AA1/Saddle Finisher-AA2)***	
Max. Paper Weight:	17 lb. Bond to 140 lb. Index (64gsm to 256gsm, 106gsm to 256gsm for Coated Media)
Paper Sizes	
2-Hole:	Letter-R, Legal, Executive
3-Hole:	Letter, 11" x 17"
Punch Method:	Sequential Processing System (One Sheet at a Time)
Punch Dust Stock:	3,000 Sheets
Power Source:	From Main Unit
Dimensions (H x W x D):	32-3/4" x 4-1/4" x 24-1/4" (833mm x 107mm x 614.8mm)
Weight:	Approximately 15.4 lb. (7kg)

Color UFR II/PCL/PS Printer Kit-P1††

Processor:	Canon Dual Custom Processors - Shared
RAM:	1GB (Max 1.5GB) - Shared
Hard Disk:	80GB - Shared
PDL Support:	UFR II, PCL Se, PostScript 3 Emulation
Std. Interface Connections:	10/100 Base-T (RJ-45), USB (2.0)
Network OS:	Windows 98/ME/2000/XP/Server 2003/Citrix Metaframe/Mac OS X

Color Universal Send Kit-G1

Color Mode:	Auto Color Select (Full Color/Gray Scale) Auto Color, Select (Full Color/B/W), Full Color, Grayscale, B/W
Address Book Capacity:	Max. 1,800 Destinations (Includes 200 One-Touch Buttons), Max. 5 LDAP Servers
Sending Methods:	E-Mail, I-Fax, SMB, File Server, (FTP, IPX, WebDAV), User Inbox
Communication Protocol	
File:	FTP (TCP/IP), SMB (TCP/IP), NCP (IPX), WebDAV
E-Mail/I-Fax:	SMTP, POP3, I-FAX (Simple, Full)
Data Format	
File, E-mail:	TIFF, JPEG, PDF, PDF (Compact)††† PDF (Trace & Smooth)†††, PDF (OCR)†††, Encrypted PDF▲, Digital Signature PDF (Device▲, User▲▲)
I-Fax:	B/W: TIFF (MH, MR, MMR) Color: TIFF (Profile-C)

Additional Accessories

- Universal Send PDF Advanced
Feature Set-A1▲▲▲
- Universal Send PDF Security
Feature Set-A1▲▲▲
- Digital User Signature PDF Kit-A1▲▲▲
- Web Access Software-E1*
- Secure Watermark-A1**
- Encrypted Secure Print Software-C1*
- HDD Data Encryption Kit-B1
- Voice Guidance Kit-B1*
- imageRUNNER 512MB Expansion RAM-C1
- Remote Operator Software Kit-A2
- HDD Data Erase Kit-A1♦♦
- Platen Cover Type K***
- Stack Bypass Tray-B1
- Card Reader Attachment-E1
- Voice Guidance Attachment-B1
- Staple Cartridge-J1
- Staple Cartridge-D2
- Document Tray-J1
- Card Reader-C1§
- Key Switch Unit-A2
- Cassette-AE1
- ADF Access Handle-A1§§
- Voice Guidance Server Q1§§§
- imagePRESS Server T1§§§
- Workflow Composer-B3
- Access Management System Kit-A1
- Braille Label Kit-E1
- eCopy Suite
- imageWARE Suite

* Power Supply Unit-S1 (for imagePRESS C1) is included.

*** Requires power outlet independently.

†† Up to 11" x 17"

† Up to 12" x 18"

†† The imageRUNNER 512MB Expansion RAM-C1 is included standard in this set item.

††† When configured on the imagePRESS C1, requires Universal Send PDF Advanced Feature Set-A1.

▲ When configured on the imagePRESS C1, requires Universal Send PDF Security Feature Set-A1.

▲▲ When configured on the imagePRESS C1, requires Digital User Signature Kit-A1.

▲▲▲ Requires the Color Universal Send Kit-G1.

■ Cannot be installed with the imagePRESS Server Q1/T1.

■ The imageRUNNER 512MB Expansion RAM-C1 is required except when configured with the Color UFR II/PCL/PS Printer Kit-P1.

◆ Voice Guidance Attachment-B1 is required for installation.

♦♦ HDD Data Encryption Kit-B1 is required for installation.

♦ Cannot be installed with the DADF-R1.

§ Requires Card Reader Attachment-E1.

§§ Requires DADF-R1.

§§§ Check with your local Authorized Canon Dealer for availability.

Canon
*image*ANYWARE

1-800-OK-CANON
www.usa.canon.com

Canon U.S.A., Inc.
One Canon Plaza
Lake Success, NY 11042

The imagePRESS C1 model is shown with optional accessories.

Adobe, PostScript, and InDesign are registered trademarks or trademarks of Adobe Systems Incorporated in the United States and/or other countries. QuarkXPress is a trademark of Quark, Inc. and all applicable affiliated companies, Reg. U.S. Pat. and Tm. Off. and in many other countries. Fiery and Spot-On are registered trademarks of Electronics for Imaging, Inc. in the U.S. Patent and Trademark Office and/or certain other foreign jurisdictions. Intel, Celeron, and Pentium are trademarks or registered trademarks of Intel Corporation or its subsidiaries in the United States and/or other countries. Windows is a registered trademark of Microsoft Corporation in the United States and/or other countries. Macintosh is a registered trademark of Apple, Inc. CANON, IMAGERUNNER, and MEAP are registered trademarks and IMAGEPRESS is a trademark of Canon Inc. in the United States and may also be registered trademarks or trademarks in other countries. IMAGEANYWARE is a trademark of Canon. All referenced product names and other marks are trademarks of their respective owners. Specifications and availability subject to change without notice. ©2008 Canon U.S.A., Inc. All rights reserved.

Federal Law prohibits copying of certain documents. Violators may be subject to penalties. We suggest that you check with your own legal counsel. Canon U.S.A., Inc. and Canon Canada, Inc. intend to cooperate with Law Enforcement Agencies in connection with claims of unauthorized copying.



0119W011
0208R-IPC1-10M-LCR

